



- For outdoor or indoor use
- Durable recycled aluminum with antimicrobial protection

A. Redi-Rite™ Portable Desktop Clipboard

With built-in storage box. Holds forms and pencils under tightly closed lid. Strong clip controls papers even in brisk wind. Holds forms to 8½ x 12. 1" clip capacity.

SND 11017 **Each**

B. Snapak™ Form Holder

Opened, it's a notebook; folded, it's a compact, protective box. Holds up to 30 forms. Hinged writing plate provides firm writing surface and prevents write-through. Holds forms to 8½ x 12. ½" clip capacity.

SND 10517 **Each**

C. Cruiser Mate™ Form Holder

Two separate storage areas. Bottom has 1" capacity for extra forms, reports, logs or tools, and has built-in pen/pencil tray. ¼" capacity removable top compartment for completed forms. Clip has a slide-on clamp for notes or cards. Holds forms to 8½ x 12. 1" clip capacity.

SND 21017 **Each**



D. Clipboards

Brown hardboard writing surface; ideal for office or job site. 1¼" clip capacity.

No.	Description	Each
UVS 40304	Letter Size	
UVS 40305	Legal Size	



Marks-A-Lot® Permanent Markers

Quick-drying, nontoxic, waterproof ink conforms to ASTM D-4236. Generous ink supply. Durable chisel tip. Black. 12 markers per box.

No.	Tip Size	Box
E. AVY 08-888	Large	
F. AVY 07-888	Regular	



G. Sharpie® Magnum® Permanent Marker

An industrial marker designed specifically for use on wet and oily surfaces. The durable aluminum barrel and felt tip are tough enough to withstand heavy use. Specially formulated water-resistant ink dries quickly and cleanly. Oversized felt chisel tip draws extra-wide, bold lines on corrugated paper, wood, metal, foil, stone, plastic and leather. Extra-large ink supply for your toughest marking projects. Black. 12 markers per box.

SNF 44001 **Box**

Felldes

- UL/CSA Approved
- 125 volts
- Grounded three-prong plug
- Manufacturer's one-year warranty

H. Indoor Heavy-Duty Extension Cords

One outlet, 15 amps, 14-gauge wire. Recommended for major appliances and office equipment. 15-ft. cord. Gray.

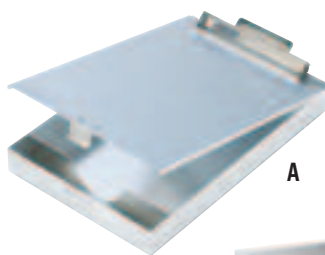
FLW 99596 **Each**

I. Indoor/Outdoor Heavy-Duty Extension Cord

One outlet, 13 amps, 16-gauge wire. 25-ft. Orange.

FLW 99597 **Each**

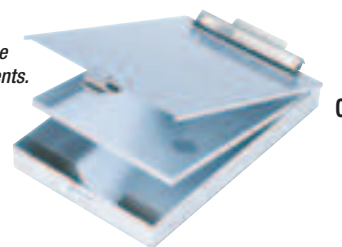
Clipboards • Markers • Extension Cords



Weatherproof storage. Lip on lid keeps box shut tight.



Extra forms store under hinged aluminum strap. Insert writing plate under top form...prevents write-through on unused forms below.



Two storage compartments.



Large tip.

Regular tip.

Super-wide tip.



See page 3 for symbol legend.
Call for current pricing.

Don't Forget WASTE RECEPTACLES pages 340-357

325