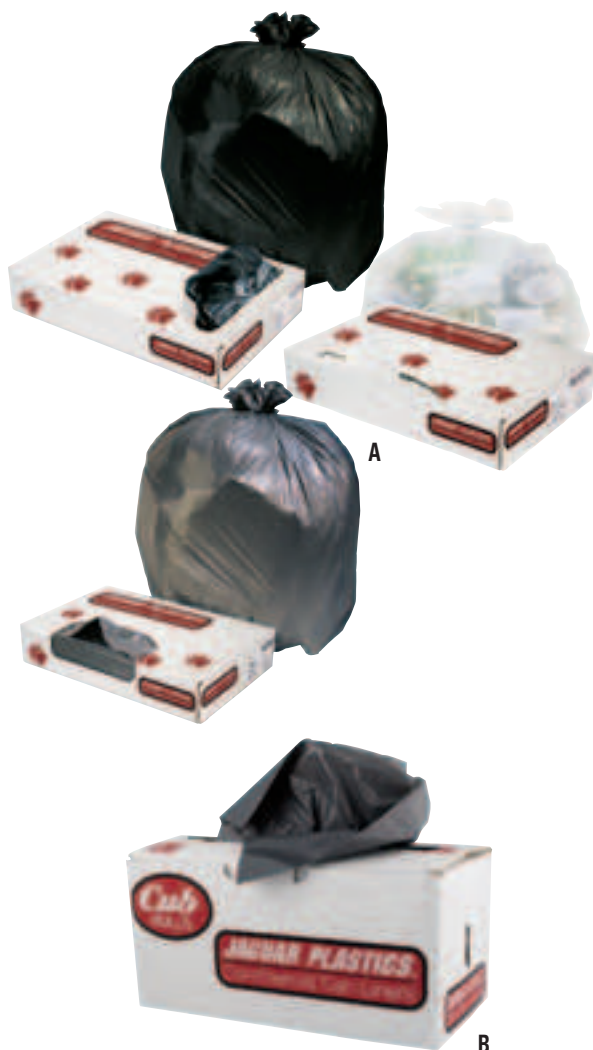


Linear Low-Density



STRENGTH GRADE KEY

- Light**—For crumpled papers, cups, light waste, etc.
- Medium**—For packaging waste, wet paper, etc.
- Heavy**—For light wood, metal scraps, wet cardboard, etc.
- Extra-Heavy**—For heavy, sharp or wet trash.
- Super/Extra-Heavy**—For heaviest cleanup jobs in warehouse, cafeteria or facility grounds.



COMMERCIAL CAN LINERS

- Star seal bottom helps prevent leakage
- Made from high-quality blended resins for superior strength and puncture resistance

A. Linear Low-Density, Bulk Flat-Pack

No.	Size	Gal. Cap.	Gauge	Case Qty.	Case
Light Grade, Black					
JAG L1717L NEW	17 x 17	4	.35	1,000	
JAG L2423L	24 x 23	10	.35	500	
JAG L2432L	24 x 32	15	.35	500	
Medium Grade, Black					
JAG L3036M NEW	30 x 36	20-30	.50	250	
JAG L3339M NEW	33 x 39	33	.50	250	
JAG L4046M NEW	40 x 46	40-45	.50	250	
JAG L3858M NEW	38 x 58	60	.50	250	
Heavy Grade, Black					
JAG L3036H	30 x 36	20-30	.65	200	
JAG L3339H	33 x 39	33	.60	200	
Extra-Heavy Grade, Black					
JAG L4046H	40 x 46	40-45	.70	100	
JAG L4347H NEW	43 x 47	56	.70	100	
JAG L3858H	38 x 58	60	.70	100	
Medium Grade, White					
JAG W2423X	24 x 23	10	.50	500	
JAG W2432X	24 x 32	15	.50	500	
Extra-Heavy Grade, White					
JAG VW3036X	30 x 36	20-30	.70	200	
JAG VW3339X	33 x 39	33	.70	150	
JAG VW4046X	40 x 46	40-45	.70	100	
JAG VW4347X	43 x 47	56	.75	100	
JAG VW3858X	38 x 58	60	.70	100	
XX-Heavy Grade, White					
JAG W3036X	30 x 36	20-30	.90	100	
JAG W3339X	33 x 39	33	.90	100	
JAG W4046X	40 x 46	40-45	.90	100	
JAG W4347X	43 x 47	56	.90	100	
JAG W3858X	38 x 58	60	.90	100	
Super Heavy, Gray					
JAG 3339 GREY	33 x 39	33	1.1	100	
JAG 4046 GREY	40 x 46	40-45	1.1	100	
JAG 4347 GREY	43 x 47	56	1.1	100	
JAG 3858 GREY	38 x 58	60	1.1	100	
Super Extra-Heavy, Gray					
JAG G3339G	33 x 39	33	1.3	100	
JAG G4046G	40 x 46	40-45	1.3	100	
JAG G4347G	43 x 47	56	1.3	100	
JAG G3858G	38 x 58	60	1.3	100	

B. "Cub," Roll Liners

Star seal bottom prevents leakage. Coreless rolls are perforated for easy dispensing.

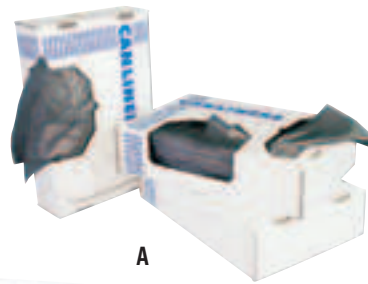
No.	Size	Gal. Cap.	Gauge	Case Qty.	Case
Medium Grade, White					
JAG RW2432X	24 x 32	15	.50	250	
XX-Heavy Grade					
JAG RW3036X	30 x 36	20-30	.90	75	
JAG RW3339X	33 x 39	33	.90	75	
JAG RW4046X	40 x 46	40-45	.90	50	
JAG RW3858X	38 x 58	60	.90	45	
Super Grade, Gray "Granite"					
JAG RG3858G	38 x 58	60	1.3	40	



A. Linear Low-Density Coreless Rolls

Performance bottom seal resists leakage. Made from high-quality raw materials; mineral-reinforced to enhance strength and puncture-resistance.

No.	Size	Gal. Cap.	Gauge	Case Qty.	Case
Light Grade, Black					
BWK 1717L <small>NEW</small>	17 x 17	4	.35	1,000	
BWK 2423L	24 x 23	8-10	.35	500	
BWK 2432L	24 x 32	12-16	.35	500	
Medium Grade, Black					
BWK 3036M	30 x 36	20-30	.40	250	
BWK 3339M	33 x 39	33	.40	250	
BWK 4046M	40 x 46	40-45	.50	250	
Heavy Grade, Black					
BWK 3036H	30 x 36	20-30	.55	200	
BWK 3339H	33 x 39	33	.50	200	
BWK 4046H	40 x 46	40-45	.60	100	
BWK 4347H	43 x 47	56	.60	100	
BWK 3858H	38 x 58	60	.65	100	
Extra-Heavy Grade, White					
BWK 2423EXH	24 x 23	8-10	.40	500	
BWK 2432EXH	24 x 32	12-16	.40	500	
BWK 3036EXH	30 x 36	20-30	.60	200	
BWK 3339EXH	33 x 39	33	.60	150	
BWK 4046EXH	40 x 46	40-45	.60	100	
BWK 4347EXH	43 x 47	56	.60	100	
BWK 3858EXH	38 x 58	60	.60	100	
Super Heavy Grade, Gray					
BWK 3036SH	30 x 36	20-30	.95	100	
BWK 3339SH	33 x 39	33	.95	100	
BWK 4046SH	40 x 46	40-45	.95	100	
BWK 4347SH	43 x 47	56	.95	100	
BWK 3858SH	38 x 58	60	.95	100	
Super/Extra-Heavy Grade, Gray					
BWK 3339SEH	33 x 39	33	1.1	100	
BWK 4046SEH	40 x 46	40-45	1.1	100	
BWK 4347SEH	43 x 47	56	1.1	100	
BWK 3858SEH	38 x 58	60	1.1	100	



B. Low-Density Repro Can Liners, Black

Flat bottom construction holds up to 30% more than star bottom bags. Meets government Comprehensive Procurement Guidelines for recycled liners—80+% recycled content, 10% post-consumer resin. Individually folded bags dispense one-at-a-time for ease of use and portion control. Contains no heavy-metal additives. ♻️

No.	Gal. Cap.	Size	Mil Gauge	Case Qty.	Case
Super-Heavy Grade					
JAG R3339H ●	31-33	33 x 39	1.5	150	
JAG R4046H ●	40-45	40 x 46	1.5	100	
JAG R4347H ●	56	43 x 47	1.5	100	
JAG R3858H ●	55-56	38 x 58	1.5	100	
Super/Extra Heavy Grade —Suitable for the toughest trash applications.					
JAG R3339HH ●	31-33	33 x 39	2.0	150	
JAG R4046HH ●	40-45	40 x 46	2.0	100	
JAG R4347HH ●	56	43 x 47	2.0	100	
JAG R3858HH ●	55-60	38 x 58	2.0	100	



C. RePrime™ Can Liners, Black

Premium quality prime resin provides better performance at lighter gauges. Natural (non-petroleum based) reinforcement additive for greater resistance to punctures and tears. Less energy based materials contribute to source reduction. Sized to match common cans. Bags will not fall into can.

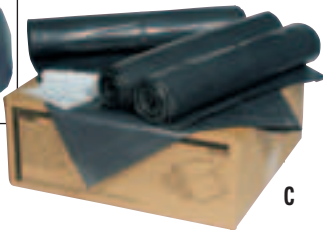
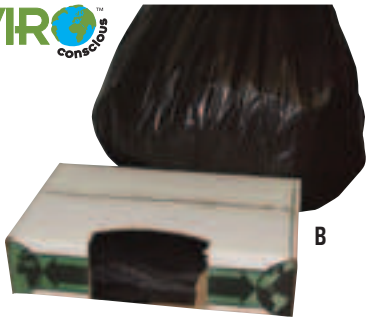
No.	Gal. Cap.	Size	Mil Gauge	Case Qty.	Case
HER H6644TK	32	33 x 44	.90	100	
HER H6644PK	32	33 x 44	1.3	100	
HER H7450TK	44	37 x 50	.90	100	
HER H7450PK	44	37 x 50	1.3	100	
HER H8053TK	55	40 x 53	.90	100	
HER H8053PK	55	40 x 53	1.3	100	



See page 3 for symbol legend.
Call for current pricing.

Don't Forget DISPOSABLE GLOVES pages 189-191

Linear Low-Density



Can Liner Color—Black, white and natural are the most common can liner colors. The “see through” quality of natural bags makes them ideal for environments where transparency is required for security purposes. If transparency is not required, black or white bags are preferred. Special color can liners (red, yellow, blue, brown, gray) can be used for at-a-glance content identification. For example, red bags are often used to indicate hazardous waste while blue bags may identify recyclable waste.

Can Liner Roll Types—A *bulk pack* consists of can liners that are separately folded, then stacked on top of one another or are folded together. A *cored roll* consists of can liners that are rolled together on top of a cardboard cylinder (similar to paper towel rolls). A *coreless roll* consists of can liners that are tightly rolled together without a cardboard cylinder. The can liners on both cored and coreless rolls may be connected by perforated edges or interleaved for nonperforated dispensing.



A. Linear Low-Density

Star seal bottom prevents vacuum at bottom of container that can restrict easy lifting. All resins are 100% recyclable; inks and colorants are heavy-metal free.

No.	Gal. Cap.	Size	Mil Gauge	Case Qty.	Case
Light-Grade, Brown					
ESS EPM24BRN	10	24 x 23	.35	500	
ESS EPM33BRN	15	24 x 32	.35	500	
ESS EPM37BRN	20-30	30 x 36	.44	250	

Extra-Heavy Grade, White—(Not shown.)

ESS ST39	33	33 x 39	.80	150	
ESS ST60	60	38 x 58	.80	100	

B. Linear Low-Density Economy Ecosac, Black

Tri-Extruded can liner with a center layer of over 70% recycled material. Star seal bottom prevents vacuum at bottom of container that can restrict easy lifting. This product is 100% recyclable and packed in an environment friendly box made with 100% recycled board.

No.	Gal. Cap.	Size	Mil Gauge	Case Qty.	Case
XX-Heavy Grade					
ESS ECO48H	40-45	40 x 48	1.0	100	
ESS ECO60H	55	38 x 60	1.0	100	

Super-Heavy Grade

ESS ECO40XH	33	33 x 39	1.5	150	
ESS ECO48XH	40-45	40 x 48	1.5	100	
ESS ECO47XH	56	43 x 48	1.5	100	
ESS ECO60XH	55	38 x 60	1.5	100	

Super/Extra-Heavy Grade

ESS ECO60SXH	55	38 x 60	2.0	50	
--------------	----	---------	-----	----	--



C. Tuffmade Polyliner® Low-Density Bags

Strong, durable liners prevent tears, eliminate double-bagging. Extra-heavy grade. Star bottom prevents leaks. Continuous tubular construction—no side seams to rupture. Gray color hides contents. On coreless rolls. Perforated for easy tear-off and dispensing. Twist ties included.

No.	Gal. Cap.	Size	Mil Gauge	Case Qty.	Case
RCP 5011-88 GRA	55	39 x 48	2.0	100	
RCP 5013-88 GRA	56	43 x 47	2.0	100	



D. Health Care Low Density Super Grade

For infectious waste and infectious linen. Star seal bottom helps prevent leakage. Made from high-quality blended resins for superior strength and puncture resistance. 1.3 mil.

No.	Gal. Cap.	Size	Color	Case Qty.	Case
JAG IW2423R	10	24 x 23	Red	500	
JAG IW2432R	15	24 x 32	Red	250	
JAG IW3339R	33	33 x 39	Red	150	
JAG IW4046R	40-45	40 x 46	Red	100	
JAG IW3658R	55	36 x 58	Red	100	
JAG IL3043Y	20	30 x 43	Yellow	200	

JAGUAR PLASTICS
Commercial Can Liners

COMMERCIAL CAN LINERS

- Star seal bottom helps prevent leakage
- Made from high-quality blended resins for superior strength and puncture resistance



A. High-Density, Bulk Flat-Pack, Natural Color

No.	Gal. Cap.	Size	Micron Gauge	Case Qty.	Case
JAG H2424L	10	24 x 24	6	500	
JAG H2433L	15	24 x 33	6	500	
JAG H303710	20-30	30 x 37	10	500	
JAG H303713	20-30	30 x 37	13	500	
JAG H303716	20-30	30 x 37	16	500	
JAG H334010	33	33 x 40	10	500	
JAG H334012	33	33 x 40	12	500	
JAG H3340S	33	33 x 40	16	200	
JAG H3660H	55	36 x 60	13	200	
JAG H386012	60	38 x 60	12	200	
JAG H3860H	60	38 x 60	13	200	
JAG H386014	60	38 x 60	14	200	
JAG H3860S	60	38 x 60	16	100	
JAG H386022	60	38 x 60	22	150	
JAG H404812	40-45	40 x 48	12	250	
JAG H4048H	40-45	40 x 48	13	200	
JAG H404814	40-45	40 x 48	14	250	
JAG H4048S	40-45	40 x 48	16	200	
JAG H434812	56	43 x 48	12	200	
JAG H434814	56	43 x 48	14	200	
JAG H4348S	56	43 x 48	16	200	



B. High-Density, Coreless Rolls, Natural Color

No.	Gal. Cap.	Size	Micron Gauge	Bags/ Roll	Rls./ Case	Case
JAG RH171806	4	17 x 18	6	50	40	
JAG RH202206	7	20 x 22	6	50	40	
JAG RH2424L	10	24 x 24	6	50	20	
JAG RH2433L	15	24 x 33	6	50	20	
JAG RH303708	20-30	30 x 37	8	25	20	
JAG RH303710	20-30	30 x 37	10	25	20	
JAG RH303713	20-30	30 x 37	13	25	20	
JAG RH3037S	20-30	30 x 37	16	25	20	
JAG RH334011	33	33 x 40	11	25	20	
JAG RH3340S	33	33 x 40	16	25	10	
JAG RH4048H	40-45	40 x 48	13	25	10	
JAG RH4048S	40-45	40 x 48	16	25	10	
JAG RH3660H	55	36 x 60	13	25	8	
JAG RH434812	56	43 x 48	12	25	8	
JAG RH434814	56	43 x 48	14	25	8	
JAG RH4348S	56	43 x 48	16	25	8	
JAG RH3860H	60	38 x 60	13	25	8	
JAG RH3860S	60	38 x 60	16	25	8	



C. Industrial Drum Liners, Rolls

One roll per case.

No.	Gal. Cap.	Size	Mil Gauge	Bags/ Roll	Case
Clear					
JAG D38633CL	55-60	38 x 63	1.8	75	
JAG D38634CL	55-60	38 x 63	2.7	50	
JAG D3865	60	38 x 65	2.5	50	
Black					
JAG D38634BN	55-60	38 x 63	2.7	50	



GLAD® Drawstring Trash Bags

No clumsy twist ties needed—uses an easy-open/close drawstring. Strong, sturdy design.

D. ForceFlex™ 13-Gal. Tall Kitchen Bags

Deep embossing increases elasticity. Unique diamond texture stretches around objects to help prevent rips and tears. 24 x 28 size; .90-mil thickness. 100 bags per case.

CLO 70427 Case

E. 13-Gal. Tall Kitchen Bags

24 x 28 size; .90-mil thickness. Three-ply strength. 100 bags per case.

CLO 78266 Case

F. 30-Gal. Outdoor Trash Bags

30 x 33 size; 1.1-mil thickness. Three-ply strength. 90 bags per case.

CLO 70313 Case

See page 3 for symbol legend.
Call for current pricing.

High-Density



A



Bottom Seal Types:

Star Seal—Designed without gussets, this is the most common type of seal. The star seal eliminates gaps along the seal, allowing the bag to conform more easily to the shape of the waste container. Star seal liners more evenly distribute weight inside the bag, maximize carrying capacity and help eliminate leaks.

Gusset Seal—Designed with both sides tucked in to form gussets, this seal is found on flat-style bags. Gusset seal liners are sealed through four layers of film where indented and just two layers of film in the middle, creating a potentially weak bottom seal.

Flat Seal—Designed with a bottom seal to create a two-dimensional bag, much like a pillowcase. Flat seals are strong along the bottom, but may leak from the corners. Liners with a flat seal do not conform as well to the shape of most containers.



A. Commercial Coreless Roll Can Liners

- ISO registered facilities ensure superior quality and consistency
- Made from Formosa resins for reliability and consistency
- Star-sealed bottom design distributes weight evenly—creates a seal up to eight times stronger than the film itself
- Innovative “clamshell” box with E-Z identification code number system to eliminate confusion

No.	Gal. Cap.	Size	Micron Gauge	Bags/ Roll	Rolls/ Case	Case
-----	-----------	------	--------------	------------	-------------	------

Perforated Roll

High-Density, Natural

IBS EC171806N	4	17 x 18	6	50	40	
IBS EC202206N	7	20 x 22	6	50	40	
IBS EC242406N	7-10	24 x 24	6	50	20	
IBS S242408N*	7-10	24 x 24	8	50	20	
IBS EC2424N	7-10	24 x 24	5	50	20	
IBS EC243306N	12-16	24 x 33	6	50	20	
IBS EC2433N	12-16	24 x 33	5	50	20	

High-Density, Black

IBS EC242406K	7-10	24 x 24	6	50	20	
IBS S243308K*	12-16	24 x 33	8	50	20	
IBS EC243306K	12-16	24 x 33	6	50	20	

***Interleaved Roll**—Compact, coreless interleaved rolls are designed for effortless “one-at-a-time” bag dispensing.

High-Density, Natural

IBS S334013N	33	33 x 40	13	25	20	
--------------	----	---------	----	----	----	--

High-Density, Black

IBS S334011K	33	33 x 40	11	25	20	
IBS S334016K	33	33 x 40	16	25	10	
IBS S366012K	55	36 x 60	12	25	8	
IBS S366017K	55	36 x 60	17	25	8	
IBS S386012K	60	38 x 60	12	25	8	
IBS S386014K	60	38 x 60	14	25	8	
IBS S386017K	60	38 x 60	17	25	8	
IBS S386022K	60	38 x 60	22	25	6	
IBS S404812K	40-45	40 x 48	12	25	10	
IBS S404816K	40-45	40 x 48	16	25	10	
IBS S404817K	40-45	40 x 48	17	25	10	
IBS S404822K	40-45	40 x 48	22	25	6	
IBS S434816K	55-60	43 x 48	16	25	8	
IBS S434822K	55-60	43 x 48	22	25	6	

No.	Gal. Cap.	Size	Micron Gauge	Bags/ Roll	Rolls/ Case	Case
-----	-----------	------	--------------	------------	-------------	------

High-Density, Natural

IBS S242406N	7-10	24 x 24	6	50	20	
IBS S243306N	12-16	24 x 33	6	50	20	
IBS S243308N	12-16	24 x 33	8	50	20	
IBS S303708N	20-30	30 x 37	8	25	20	
IBS S303710N	20-30	30 x 37	10	25	20	
IBS S303713N	20-30	30 x 37	13	25	20	
IBS S303716N	20-30	30 x 37	16	25	20	
IBS S334011N	33	33 x 40	11	25	20	
IBS S334016N	33	33 x 40	16	25	10	
IBS S334017N	33	33 x 40	17	25	10	
IBS S366014N	55	36 x 60	14	25	8	
IBS S366017N	55	36 x 60	17	25	8	
IBS S386012N	60	38 x 60	12	25	8	
IBS S386014N	60	38 x 60	14	25	8	
IBS S386017N	60	38 x 60	17	25	8	
IBS S386022N	60	38 x 60	22	25	6	
IBS S404812N	40-45	40 x 48	12	25	10	
IBS S404814N	40-45	40 x 48	14	25	10	
IBS S404816N	40-45	40 x 48	16	25	10	
IBS S404817N	40-45	40 x 48	17	25	10	
IBS S434812N	55-60	43 x 48	12	25	8	
IBS S434814N	55-60	43 x 48	14	25	8	
IBS S434816N	55-60	43 x 48	16	25	8	
IBS S434817N	55-60	43 x 48	17	25	8	

Talkin' trash...



A. Commercial Coreless Roll Can Liners, Value Packs

ISO registered facilities ensure superior quality and consistency. Made from Formosa resins for reliability and consistency. Star-sealed bottom design distributes weight evenly—creates a seal up to eight times stronger than the film itself. Innovative “clamshell” box with E-Z identification code number system to eliminate confusion. Compact, coreless interleaved rolls are designed for effortless “one-at-a-time” bag dispensing.

No.	Gal. Cap.	Size	Micron Gauge Eqv.	Bags/ Roll	Rolls/ Case	Case
High-Density, Natural						
IBS VALH2433N8	12-16	24 x 31	8	50	20	
IBS VALH3037N10	20-30	30 x 36	10	25	20	
IBS VALH3037N13	20-30	30 x 36	13	25	20	
IBS VALH33340N11	33	33 x 39	11	25	20	
IBS VALH33340N13	33	33 x 39	13	25	20	
IBS VALH33340N16	33	33 x 39	16	25	10	
IBS VALH3660N12	55	36 x 58	13	25	8	
IBS VALH3660N14	55	36 x 58	14	25	8	
IBS VALH3660N16	55	36 x 58	16	25	8	
IBS VALH3860N14	60	38 x 58	14	25	8	
IBS VALH3860N16	60	38 x 58	16	25	8	
IBS VALH3860N22	60	38 x 58	21	25	6	
IBS VALH4048N12	40-45	40 x 46	13	25	10	
IBS VALH4048N14	40-45	40 x 46	14	25	10	
IBS VALH4048N16	40-45	40 x 46	16	25	10	
IBS VALH4348N12	55-60	43 x 46	13	25	8	
IBS VALH4348N14	55-60	43 x 46	14	25	8	
IBS VALH4348N16	55-60	43 x 46	16	25	8	
High-Density, Black						
IBS VALH3860K22	60	38 x 58	22	25	6	
IBS VALH4048K22	40-45	40 x 46	22	25	6	
IBS VALH4348K22	55-60	43 x 46	22	25	6	



- Star seal bottom prevents vacuum at bottom of container that can restrict easy lifting
- All resins are 100% recyclable; inks and colorants are heavy-metal free

B. High-Density, Clear

No.	Gal. Cap.	Size	Micron Gauge	Case Qty.	Case
ESS HDL24CLR	10	24 x 24	6	1,000	
ESS HDL33CLR	15	24 x 33	6	1,000	
ESS HDM33CLR	15	24 x 33	8	1,000	
ESS HDMP37CL	20-30	30 x 37	10	500	
ESS HDM48CLR	40-45	40 x 48	12	250	
ESS HDH48CLR	40-45	40 x 48	14	250	
ESS HDX48CLR	40-45	40 x 48	17	250	
ESS HDX60CLR	55	36 x 60	17	200	
ESS HDH45CLR	56	43 x 48	14	200	
ESS HDX45CLR	56	43 x 48	17	200	
ESS HDX62CLR	60	38 x 60	17	200	



See page 3 for symbol legend.
Call for current pricing.

High-Density



C. High-Density, Coreless Rolls, Clear

No.	Gal. Cap.	Size	Micron Gauge	Case Qty.	Case
ESS BR2424L	10	24 x 24	6	1,000	
ESS BR2433L	15	24 x 33	6	1,000	
ESS BR2433M	15	24 x 33	8	1,000	
ESS BR3037M	20-30	30 x 37	8	500	
ESS BR3037MP	20-30	30 x 37	10	500	
ESS BR3037H	20-30	30 x 37	13	500	
ESS BR3340M	33	33 x 40	12	500	
ESS BR3340X	33	33 x 40	17	250	
ESS BR4048M	40-45	40 x 48	12	250	
ESS BR4048H	40-45	40 x 48	14	250	
ESS BR4048X	40-45	40 x 48	17	250	
ESS BR4348X	56	43 x 48	17	200	
ESS BR3860X	60	38 x 60	17	200	
ESS BR3860SX	60	38 x 60	22	150	

D. High-Density, Coreless Rolls, Black

No.	Gal. Cap.	Size	Micron Gauge	Case Qty.	Case
ESS BRX48BK	40-45	40 x 48	17	250	
ESS BRSX48B	40-45	40 x 48	22	150	
ESS BRSX62B	60	38 x 60	22	150	